



A LIFE LIVED OUTSIDE

BRIGHT • MYRTLEFORD • MOUNT BEAUTY • HARRIETVILLE

visitbrightandsurrounds.com.au

BRIGHT • MYRTLEFORD • MOUNT BEAUTY • HARRIETVILLE

BRIGHT & SURROUNDS

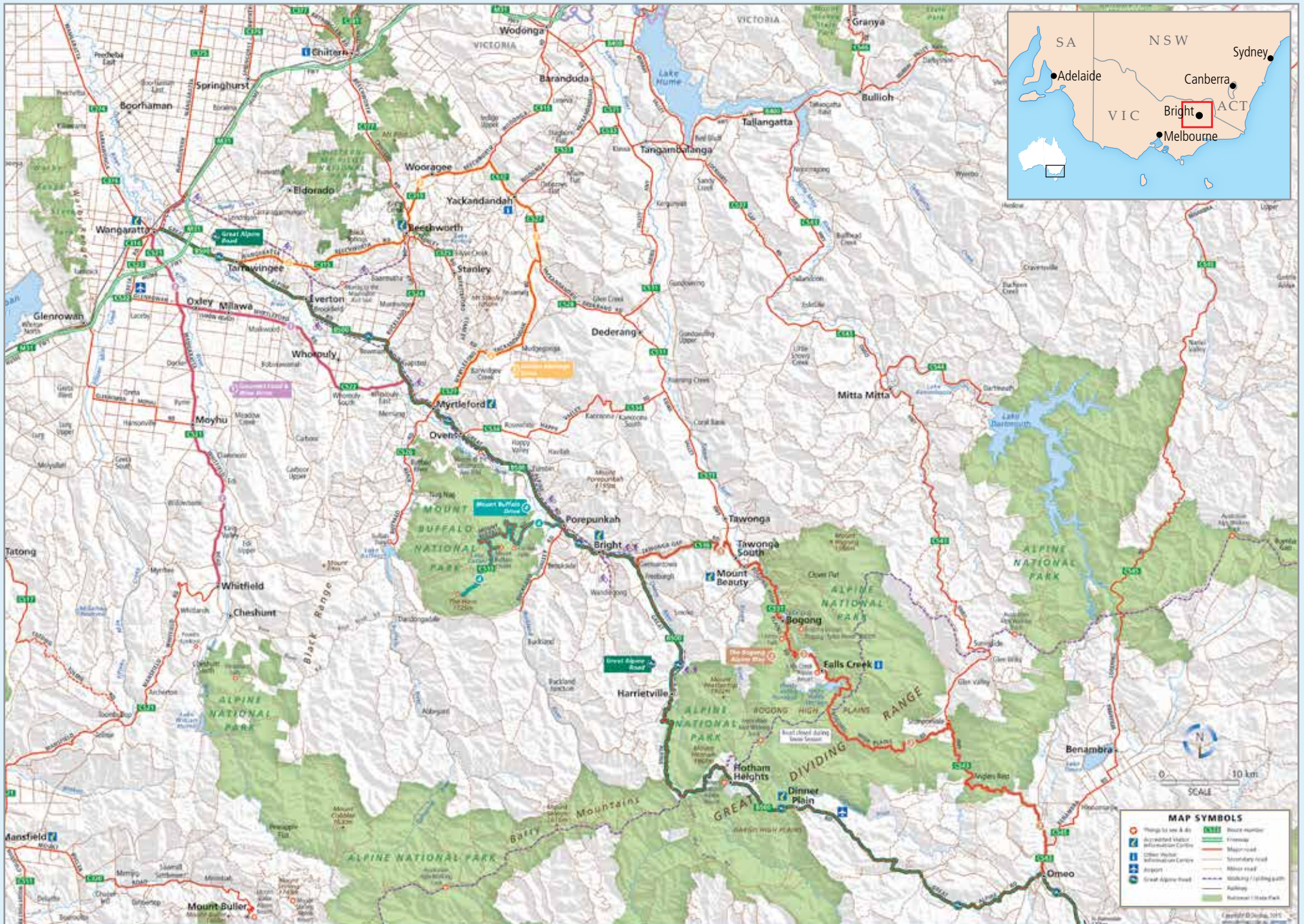


WELCOME

A LIFE LIVED OUTSIDE

Welcome to Bright & Surrounds, an area of outstanding natural beauty, of mountains and rivers, lush fertile valleys and picturesque historic towns. Four distinct seasons make this region a great place to visit all year round. Here lies the stuff of indelible holiday memories.

IN A NUTSHELL	04
GETTING HERE	06
ACCOMMODATION	07
BEFORE NOW	08
• DISCOVER BRIGHT and POREPUNKAH, WANDILIGONG, THE BUCKLAND VALLEY & MOUNT BUFFALO	10
• DISCOVER MYRTLEFORD and GAPSTED, OVENS, HAPPY VALLEY & EUROBIN	12
• DISCOVER MOUNT BEAUTY and FALLS CREEK, DEDERANG, BOGONG VILLAGE, TAWONGA & TAWONGA SOUTH	14
• DISCOVER HARRIETVILLE and SMOKO & FREEBURGH	16
• DINNER PLAIN	18
SNOW BUSINESS	19
ACTIVITIES	20
ALPINE NATIONAL PARK	22
MOUNT BUFFALO NATIONAL PARK	24
TRACKS AND TRAILS	26
LAKES, RIVERS AND WATERFALLS	27
A CYCLING MECCA	28
TAKE A TOUR	30
FOR THE LOVE OF FOOD	32
THIRSTY WORK	34
RETAIL THERAPY	35
EVENTS CALENDAR	36
FAMILY FUN	38
LOCAL MARKETS	40



IN A NUTSHELL

THERE ARE MANY REASONS WHY BRIGHT, MYRTLEFORD, MOUNT BEAUTY AND HARRIETVILLE HAVE BEEN FAVOURITE DESTINATIONS FOR GENERATIONS OF HOLIDAYMAKERS. HERE ARE JUST A FEW ...

REALLY GREAT OUTDOORS

Dotted along the Ovens and Kiewa Rivers the towns are nestled at the very foot of the Mount Buffalo and Alpine National Parks. Snow-covered in winter creating a haven for downhill and cross-country skiers, snowboarders and tobogganers, Mount Buffalo, Mount Hotham, Mount Bogong, Mount Feathertop and Falls Creek are also fantastic warm season escapes. They offer excellent camping areas, lakes and waterfalls, bushwalking trails, horse-riding, mountain biking and even paragliding adventures for thrill seekers. A photographer's paradise, the mountains offer spectacular sunset vistas, beautiful wildflower displays and the chance to see Australia's native birds and animals in their natural environment.



PICTURE PERFECT VALLEYS

Fertile river flats and the four distinct seasons make these among the most agriculturally rich areas of Australia where prime beef and dairy cattle are raised, fine wines produced and there is an abundance of fresh food, much available at farm gates and markets including local walnuts, chestnuts and hazelnuts, berries, olives, apples and all kinds of seasonal veggies.

FAB FOOD, FINE WINE AND GREAT BEER

Excellent restaurants and cafés serve local seasonal produce and offer cosy winter fires and shady courtyards in summer. Many boutique wineries producing an array of cool climate reds and whites also offer top nosh and lovely views from their cellar door cafés and restaurants. Locally grown hops also flavour the area's award-winning artisan beer.

SUPER CYCLING

The area is famous as one of Australia's premier cycling hubs with the Murray to Mountains Rail Trail the jewel in the crown. The surrounding peaks offer plenty of challenges for serious riding enthusiasts and there is continuous development of trails in the mountain bike parks.

AUTUMN COLOUR & COOL PLACES TO LAZE

Gracious avenues of poplars, maples, silver birches, pin oaks, golden and claret ashes and liquid amber, many planted early last century, cloak the towns and villages of the area in stunning autumn colours. In summer, these same trees offer welcome shade and a fine place to lie down and catch up on some long-overdue reading.

FESTIVAL FUN

A packed year-round calendar of festivals and events celebrates all things cultural, sporting, gastronomic and everything in between.

GREAT TOURING

By motorbike, cycle or car, this area offers some of Australia's best on and off-road touring including the Great Alpine Road and the Bogong Alpine Way touring loop. State forests throughout the area also offer a myriad of seasonal 4WD trails for off-road enthusiasts.

HISTORY TO EXPLORE

A fascinating history shaped by pioneering pastoralists, fortune-seeking gold miners and post-war migration.

For more information visit visitbrightandsurrounds.com.au

BRIGHT & SURROUNDS SEE & DO

BEAUTIFUL CASCADES

Fainter Falls
Falls Creek Falls
Eurobin Falls, Mount Buffalo
Carmichael Falls, Dinner Plain
Ice Flower Falls, Hotham

TOP FISHING

Kiewa River
Buckland River
Mount Beauty Pondage
Ovens River
Lake Buffalo

GET AIRBORNE

Paragliding over Bright
Microflights over Porepunkah
Gliding Mount Beauty

GREAT LAKES

Lake Buffalo, Myrtleford
Lake Guy, Bogong Village
Rocky Valley Lake, Falls Creek,
Lake Catani, Mount Buffalo,
Mount Beauty Pondage

TEE OFF

Enjoy scenic 18 hole golf courses at:
Mount Beauty
Myrtleford
Bright



GETTING HERE

FOUR DISTINCT SEASONS MAKE BRIGHT AND SURROUNDS A GREAT PLACE TO VISIT ALL YEAR ROUND.

BY ROAD

Bright is a 3½-hour drive from Melbourne via the M31 Hume Freeway and the Snow Road C522 near Glenrowan or the B500 (Great Alpine Road) turnoff near Wangaratta. Along the way, enjoy the panoramic views of Mount Buffalo towering over the Ovens Valley. Myrtleford is about 25 minutes from the turnoff and Bright about 45 minutes. Harrietville is a further 20 minute-drive beyond Bright on the Great Alpine Road. Mount Beauty is about an hour from Myrtleford via the Great Alpine Road and Happy Valley Road to the Kiewa Valley Highway.

BUSES

V/Line runs daily bus services to Myrtleford, Bright & Mount Beauty.

vline.com.au

Alps Bus Link offers services from Bright to Omeo via Harrietville, Mount Hotham and Dinner Plain.

omeobus.com.au

TRAINS

Trains run daily from Melbourne and Sydney via Wangaratta, an hour's drive from Bright.

vline.com.au

BY AIR

Albury airport is about 1¼ hours from Mount Beauty and about 1½ hours from Bright. Qantas, REX Regional Express and Virgin operate several flights each day from Melbourne and Sydney. Check airline websites for up to date flight information to and from Albury. Cars can be hired at the airport. During the snow season Qantas offers direct Sydney-Hotham flights and transfers to the resort.

Visit mthotham.com.au for more information.



ACCOMMODATION

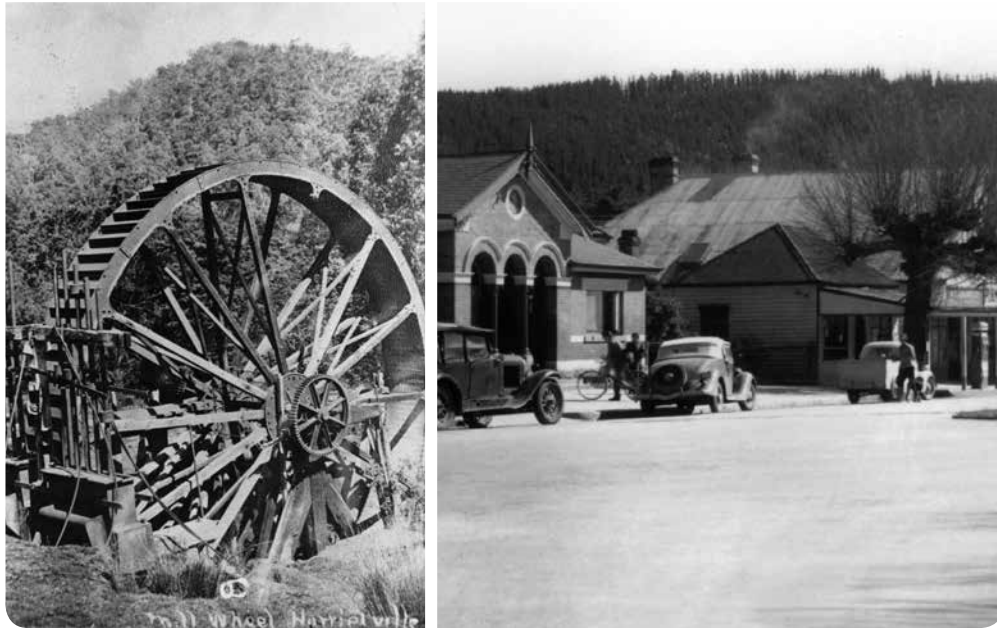
Something on offer for everyone, Bright and Surrounds has a huge selection of accommodation. Cottages, villas, units and holiday homes are designed to suit couples, friends or the whole family. There are secluded retreats for romantic getaways, hotels, motels and beautiful bed and breakfasts. From modern to eco, quirky to cosy, you will find something to suit. If camping is more your style there are 20 holiday parks to choose from, with camping sites right on the river, powered sites with views or some sweet cabins.

Browse an extensive list of accommodation options at visitbrightandsurrounds.com.au

BEFORE NOW

BEFORE EUROPEAN SETTLERS CAME TO THE REGION IN THE LATE 1820S, THE FIRST AUSTRALIANS HAD FOR MILLENNIA VISITED THE HIGH COUNTRY DURING THE WARMER MONTHS FOLLOWING THE RIDGELINES FROM THE VALLEYS BELOW.

The arrival of explorers Hume and Hovell in 1824, and subsequent widespread land clearing of the valleys by the pastoralists who followed, was catastrophic for the original inhabitants whose displacement brought an end to cultural traditions dating back thousands of years. The High Plains once frequented by traditional owners proved a boon for cattlemen who found plentiful summer grazing for their stock. Huts were built for shelter and storage during mustering and today many remain, offering emergency shelter from the elements for hikers.



GOLDEN VALLEYS

In the early 1850s rich alluvial gold deposits were discovered in the Buckland Valley bringing thousands of gold seekers from around the world. By the mid-1850s it was home to several thousand Chinese miners who became the focus of a violent attack in an incident known as the Buckland Riot in July 1857, leading to their expulsion from the area.

Myrtleford then was a remote cattle run known as Myrtle Creek Run, with diggers crossing Myrtle Creek on their way to the goldfields. Discoveries were made along the Ovens River to Harrietville and from Morses Creek (re-named Bright after the 19th century political and social reformer, John Bright, in 1862) to Wandiligong (originally known as Growlers Creek). Reef mining came next, Harrietville was the home of one of the world's largest electric powered mechanical dredges.

HISTORY BUFFS' MUST DO

- **Explore** the Reform Hill gold mining trail at Myrtleford
- **Visit** historic Buckland Valley cemetery and Chinese monument
- **See** Gold Era buildings and visit The Diggings and Chinese Swing Bridge at Wandiligong
- **Pan** for gold in the Ovens River at Harrietville
- **See** water races carved by gold miners on Bright's Canyon Walk and the five-headed stamp battery on Morse's Creek
- **Visit** Wallace Hut near Falls Creek, Victoria's oldest cattlemen's shelter
- **Walk** the historic Cobungra Ditch trail near Dinner Plain
- **Visit** the Harrietville Tronoh Dredge Hole, final resting place of the Tronoh Dredge, which was one of the largest electric powered mechanical dredges
- **Talk** with local experts to discover more, visit local museums for interesting artefacts and information:

Bright Museum

Harrietville Museum

Kiewa Valley Museum
- Mount Beauty

Old School Museum
- Myrtleford

BRIGHT MUST DO

- **See** the town in all its seasonal glory during Autumn or Spring
- **Cool off** in the Ovens River or splash about in the Splash Park on a hot day
- **Enjoy** an award-winning boutique ale or wine at a local cellar door
- **Cycle** the Rail Trail to Porepunkah or Wandiligong
- **Experience** the thrill of hurtling downhill at Bright Mystic Mountain Bike Park
- **Admire** the mountain panorama from Huggins Lookout
- **Discover** Bright on foot, pick up a Walks and Trails Guide from the Visitor Centre, or download it online
- **Be dazzled** by the stunning views to Buffalo over a leisurely lunch at a local winery
- **Get airborne** on a thrilling paragliding flight or microlight aircraft and see it all from 500 metres above Bright and the Buckland Valley
- **Soak up** some history in Wandiligong or the Buckland Valley
- **Stock up** on seasonally available local produce straight from the grower's door
- **Float**, lilo, blow-up boat or tube down the Ovens or Buckland rivers
- **Tour** the region, find out the best secrets with a guided tour



DISCOVER BRIGHT

and POREPUNKAH, WANDILIGONG,
THE BUCKLAND VALLEY & MOUNT BUFFALO



Justifiably one of Victoria's favourite year-round holiday places, Bright and surrounding villages are known as much for its spectacular autumn colour as for its perfect location on the Ovens River, nestled between the Mount Buffalo and Alpine National Parks.

It serves as a great base from which to explore the whole region – for day trips to the snow in winter or during the rest of the year, to experience the myriad of special places and outdoor adventures on offer in and around the Ovens and Kiewa Valleys and the spectacular High Country above. Spring is a particularly special time of the year with mature gardens crowded with blooms of dogwoods, daffodils, irises, roses, annuals and everything else in between.

There's a lot to love about this place because apart from river swimming, bike riding, camping, wildlife spotting and horse riding, there's fly fishing, golf, tennis, croquet, bowls and a stack of fun and funky festivals. Talk to a local at the Information Centre to find out exactly where to stay, what to do, where to eat and what's on in Bright any time of the day or year. Or find all the information you need at: visitbright.com.au

WANDILIGONG

Just a few minutes by road from Bright or an easy five kilometre peddle on the purpose-built cycle trail, this picture-perfect village on Morse's Creek is tucked away in a jewel of a valley patch-worked with apple orchards and nut groves.

The Diggings Walk with its Chinese Swing Bridge is a great way to discover the history of this magical little town.

POREPUNKAH

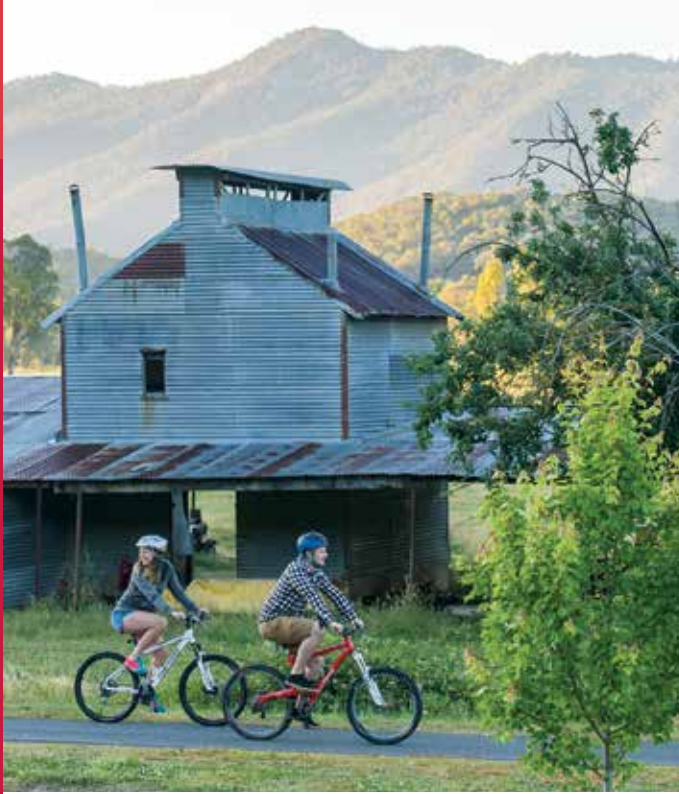
Porepunkah is a laid-back village six kilometres from Bright on the Great Alpine Road. Built around the junction of the Buckland and Ovens Rivers, it is the nearest town to Mount Buffalo National Park, which dominates the skyline to the south, and the entry point for the beautiful Buckland Valley.

THE BUCKLAND VALLEY

A few minutes' drive from Bright, this is the beautiful valley of the Buckland River. Nestled at the base of Mount Buffalo the valley is dotted with dairy and alpaca farms, vineyards, nut groves and orchards, as well as some of the best boutique accommodation in the North East.

MYRTLEFORD MUST DO

- **See** the town in all its seasonal glory during Autumn or Spring
- **Fill a basket** with fresh local fare at the weekly Produce Market
- **Celebrate** Myrtleford's Italian heritage at the fabulous La Fiera festival each May
- **Explore** Myrtleford's rich history at the Old School Museum
- **Hug** the Big Tree, a huge centuries-old River Red Gum near the centre of town
- **Hike** from the bottom or drive to the top of Reform Hill and enjoy the panoramic views from the Lookout
- **Ride** the Rail Trail to Gapsted, drink in the valley views over a glass or two
- **Discover** an amazing Middle Eastern bazaar right in the heart of town
- **Visit** a farm gate and stock up on all things berry or visit one of Australia's oldest walnut farms
- **Watch** pumpkin seed oil being pressed and sample different types of pumpkin seed products
- **Sample** delicious cool climate reds and whites from the region's family-owned wineries
- **Discover** Happy Valley delights; an olive grove and boutique wines
- **Feed** farm animals, including deer, emus and ostriches in Eurobin



DISCOVER MYRTLEFORD

and GAPSTED, OVENS, HAPPY VALLEY & EUROBIN



The major hub of the rich Ovens Valley agricultural region, this lovely town with its welcoming avenues of mature poplars and pin oaks is set against a beautiful mountain backdrop.

Myrtleford is rich with history, known for the distinctive corrugated iron tobacco drying kilns dotted throughout the countryside. The town is also fast becoming the place for a little retail therapy, with offerings such as a Middle Eastern bazaar, designer clothes, organic goods, and unique homewares. A great selection of country pubs, tasty cafés and a coffee roaster makes a visit to Myrtleford a must. A key town for any journey along the Murray to Mountains Rail Trail, it's the perfect distance to stay and break up a ride from Bright to Beechworth or Wangaratta.

GAPSTED

Taylor's Gap at Gapsted marks a grand gateway to Bright and Surrounds, the sublime beauty of the Ovens Valley with its vistas to Mount Buffalo and beyond. Gapsted is a small community of farms nestled at the foot of the Stanley Ranges. Here the fertile soils produce fat beef and dairy cows, grapes, berries, vegetables and nuts.

OVENS & HAPPY VALLEY

This lovely part of the world boasts picturesque scenery, locally produced wines, olives and a unique pumpkin seed oil producer. From Myrtleford, the tiny community of Ovens is a five-minute drive or an easy five kilometre cycle along the Rail Trail. At Ovens take the turnoff to Happy Valley.

EUROBIN

A 10-minute drive along the valley towards Bright from Ovens along the Great Alpine Road. It is well known for its farm gates and spectacular views of Mount Buffalo. It also provides a perfect rest stop along the Murray to Mountains Rail Trail at Eurobin Station, which is equipped with fresh water toilet facilities.

MOUNT BEAUTY MUST DO

- **Catch** a fish in the Kiewa River or the Pondage
- **Fill** a basket at the Community Market, held on the first Saturday of each month
- **Visit** the Alpine Discovery Centre to learn about Mount Beauty's beginnings as a purpose-built town for workers on the Kiewa Hydro Electric Scheme
- **Saddle up** for a trail ride and explore the region on horseback
- **Hike** up Mount Bogong. (One for the fit and well prepared, the walk is steep and the weather highly changeable)
- **Check in** for a weekend of great music at the Mount Beauty Music Festival or Sweet Valley Sounds
- **Ride** Big Hill Mountain Bike Park, one of the original MTB parks
- **Savour** a local craft beer, or cool climate boutique wine
- **Take** a short walk to lovely Fainter Falls or around the pondage
- **Paddle** a canoe on Lake Guy in Bogong Village and enjoy a BBQ afterwards at the excellent lakeside facilities
- **A day** at The Dederang Picnic Races
- **Float** down the fresh mountain water of the Kiewa River



DISCOVER MOUNT BEAUTY

and FALLS CREEK, DEDERANG, BOGONG
VILLAGE, TAWONGA & TAWONGA SOUTH



A 30km scenic drive from Bright, the hub of the beautiful Kiewa Valley is surrounded by the Alpine National Park. Mount Beauty a perfect base for family holidays and lovers of outdoor activities of all kinds.

Settle in at Mount Beauty, stroll along the Kiewa River or just sit and relax, soaking in the stunning valley vistas. It's an easy gateway to the state's highest peaks, including Mount Bogong and Falls Creek, where you will find some of the state's best hiking and skiing.

The incredible mountainous backdrops create the perfect conditions for gliding; enjoy a bird's eye view of the National Park. Mount Beauty is one of the original mountain bike playgrounds, with tracks and trails to challenge and thrill.

BOGONG VILLAGE

Halfway between Mount Beauty and Falls Creek, Bogong Village is a restful place to kick back in a tranquil environment surrounded by the Alpine National Park and overlooking Lake Guy. The perfect location for some serious R&R. For those who prefer a more active holiday, the village offers a great base for all kinds of outdoor adventuring, whatever the season.

TAWONGA

The peaceful community of Tawonga lies in the upper reaches of the Kiewa Valley. Surrounded by beautiful countryside with views to Mount Bogong, Tawonga is ideal for family holidays with great camping facilities and many walking and cycling tracks and trails. Here the trout fishing is so good, there are guided tours of the Kiewa River, with a master fly fisherman.

DEDERANG

The gateway to the Kiewa Valley, this pretty country town is best known for its annual picnic race day. On the first Saturday of the year the tiny population of just over 400 swells to more than 6000. One of Australia's oldest race meetings, the Dederang Picnic Races has been a premier event on Victoria's country racing calendar since 1865.

HARRIETVILLE MUST DO

- **Experience** mountain majesty hiking the Bon Accord or Bungalow Spur Tracks to Mount Feathertop from Harrietville
- **Australia's** annual national bluegrass & old time music festival
- **Cycling** to Mount Hotham as part of the 7 Peaks Challenge
- **Pan** for gold in the Ovens River
- **Pick** your own succulent summer blueberries
- **Walk** the 30 minute trail around Tronoh Dredge
- **Hook** a trout for dinner at the trout and salmon farm
- **Delve** into local history at the Harrietville Museum
- **Taste** a delicious home-made ice cream, chutneys, condiments and lavender goods
- **Ride** the Rail Trail from Harrietville to the Trout Farm
- **Let** the kids loose in the fantastic local playground
- **Visit** a berry farm gate and select your favourite berries



DISCOVER HARRIETVILLE

and SMOKO & FREEBURGH



Right at the foot of Mount Hotham and Mount Feathertop, 25km from Bright at the end of the valley stretch of the B500 Great Alpine Road, this picturesque town is an ideal all-season holiday destination.

In winter its proximity to Mount Hotham (30km away) and Falls Creek (75km) ski resorts make it an accessible and affordable base for lovers of all kinds of snow sports.

During the 'green' seasons, Harrietville is a perfect place to enjoy the great outdoors. Hikers and cyclists are drawn to the challenging mountain roads and trails in and around the town, but this scenic village by the Ovens River is also a fantastic place to simply relax and shrug off the stresses of city life.

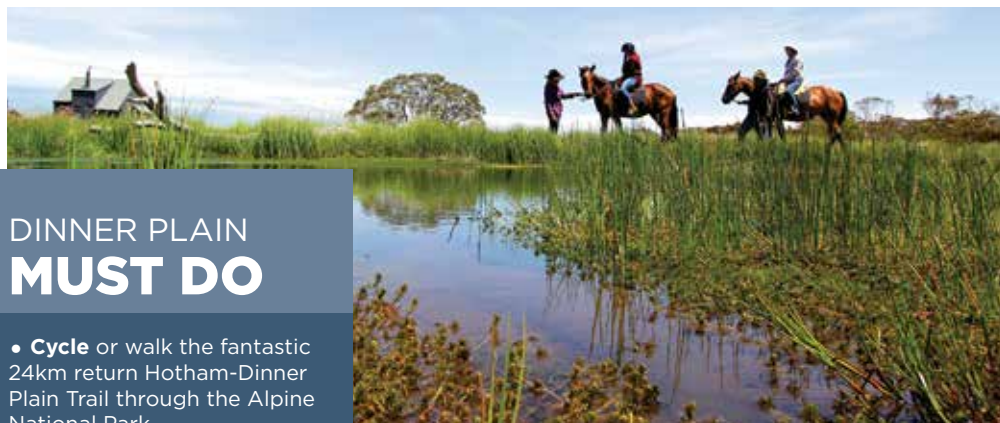
HISTORY

Harrietville was originally a pastoral property named for Harriet Tisdale, one of the few European women living in the area in the mid-19th century. The town boomed after rich gold discoveries were made in 1852 and the legacy of the gold seekers is evident today in the landscape shaped by mining. Tronoh Dredge is one such place, one of three local waterholes created by gold dredging.

SMOKO & FREEBURGH

Discover the hamlets of Smoko and Freeburgh on the scenic drive along the Great Alpine Road hugging the Ovens River between Bright and Harrietville. Well known for locally grown chestnuts, hazelnuts and walnuts as well as berries and a variety of vegetables. A number of lovely camping options are available, both commercial operators and bush camping all along the river.

DISCOVER DINNER PLAIN



DINNER PLAIN MUST DO

- **Cycle** or walk the fantastic 24km return Hotham-Dinner Plain Trail through the Alpine National Park
- **Ride** the many mountain bike trails or fine tune your skills on the pump track
- **Walk** to Carmichael Falls, a 2.5km return moderate walk into the Alpine National Park, right next to the village
- **Tubing fun**, winter or summer, enjoy the thrill of flying down the mountain on a tube
- **Have a hit** of tennis or play outdoor chess
- **Frisbee** (disc) golf on Australia's highest course
- **Learn** to ski or snow board during the winter months
- **Night** Skiing/Boarding under lights, so much fun in the winter wonderland
- **Kids** love the unique playground, in the theme with the wild brumbies
- **Take** the binoculars on a stroll around the cross country trails for a spot of bird watching
- **Visit** the Alpine Bog area of the village, home to the endangered Alpine Tree Frog

Dinner Plain is an alpine village 1500m above sea level, 13km to the east of Mount Hotham and 45km to the west of Omeo on the Great Alpine Road.

Surrounded by the Alpine National Park, State Forest and pastoral leases, it is well known for its unique architectural style, inspired by the historic cattlemen's huts of the High Country using materials of timber, local stone and corrugated iron.

Open throughout the year, Dinner Plain is a great family winter destination with a beginner-level ski run and many cross-country ski trails. Nature lovers also head to Dinner Plain during the warmer months to experience a number of fine multi-use trails radiating from the village, offering excellent walking and bird-watching opportunities amongst snow gum forests and sub-alpine landscapes in full wildflower bloom.

visitdinnerplain.com.au



THERE'S SNOW BUSINESS...

SOME OF THE STATE'S BEST SKIING, SNOWBOARDING, CROSS-COUNTRY AND SNOW PLAY AREAS ARE A MERE HOP AWAY FROM BRIGHT AND ITS SURROUNDING TOWNS AND VILLAGES MAKING THEM GREAT BASES FOR DAY TRIPS AND GEAR HIRE.

MOUNT HOTHAM AND DINNER PLAIN

Mount Hotham is known as the mountain for the serious skier and is Victoria's highest resort, offering amazing 360 degree panoramas over the snow-covered slopes to the horizon. There are many accommodation options, restaurants and day spas on-mountain to discover.

Visit mthotham.com.au

Dinner Plain is Hotham's sister resort and is just 10 minutes down the road. More than 200 chalets are nestled amongst the snow gums. Dinner Plain offers a gentle beginner ski run and great tobogganing and snow play with facilities at the bottom

of the run. Cross-country skiing is also popular here with over 35km of groomed trails. There are regular bus transfers between Hotham and Dinner Plain and services from Bright and Harrietville.

Go to visitdinnerplain.com.au

FALLS CREEK

Victoria's largest alpine resort is located 31km from the Mount Beauty township. During winter, bus transfers are available from Mount Beauty. Falls Creek is designed for all abilities, with snowboarding, cross country skiing, downhill skiing and snow parks. An excellent range of accommodation, dining options, tours,

retail outlets, schools and organised activities are available.

Visit falls creek.com.au

MOUNT BUFFALO

Mount Buffalo National Park provides winter activities ideal for first time snow goers, or anyone looking to have a bit of fun with the kids. Tobogganing and snow play activities are great fun for the family or try a guided snow shoeing tour to really experience this beautiful winter wonderland. Venture off the beaten track for cross-country skiing with 14km of trails on offer over the plateau.

Go to visitmountbuffalo.com.au



A LIFE LIVED OUTSIDE, AND ACTIVITIES TO MATCH

TOP ADVENTURE ACTIVITIES

Get airborne ... paragliding, microlights and gliding

Dirt motorbike riding

Waterskiing

Abseiling and rockclimbing

Skiing and snowboarding

Hiking or running Victoria's highest peaks

TOP OUTDOOR ACTIVITIES

Cycling; road, Rail Trail and mountain biking

Walking and hiking, the perfect way to get back to nature

Four wheel driving. Not an enthusiast? Take a tour and be amazed

Floating down the river on a lilo

Kayaking or canoeing

Snow play, tobogganing and snowshoeing

Fishing in fresh water rivers and lakes

TRADITIONAL ACTIVITIES

Touring; road bike or car, follow our winding roads to spectacular scenery

Three golf courses to explore and to challenge

Tennis, including real grass courts in Myrtleford

Bowls at the local green

Pamper; massage, facial or body wrap

SOMETHING A LITTLE DIFFERENT

Enjoy the ultimate adventure picnic hanging from the cliffs of Mount Buffalo

Caving through Buffalo's granite rivers

Horse riding in the High Plains

Croquet under the elms in Bright

Tubing at Dinner Plain

Hire an electric bike and tour the Rail Trail



ALPINE NATIONAL PARK

VICTORIA'S LARGEST NATIONAL PARK, COVERING 646,000 HECTARES, IS A PLACE TO EXPERIENCE THE GREAT AUSTRALIAN OUTDOORS IN ALL ITS MAGNIFICENT GUISES. ONCE THE SNOW HAS MELTED OFF THE MOUNTAIN PEAKS THEY ARE TRANSFORMED INTO AMAZING PLACES TO HIKE AND TREK AND CAMP, WATCH BIRDS, EXPLORE HISTORY, CYCLE DOWN, FLY OVER, TOUR AROUND, SWIM AND FISH IN AND OBSERVE UNIQUE FLORA AND FAUNA.

Bright & Surrounds are the best places in the state to discover the north eastern sections of the Alpine National Park, including Mount Hotham, Mount Feathertop and Mount Bogong. A number of Parks Victoria-approved tour operators guide bushwalks, horse rides, bird-watching, canoe and cycling treks year-round. Go to parkweb.vic.gov.au for details.

HIGHLIGHTS

Walking: Join the Australian Alps Walking Track from Harrietville via Bon Accord Spur Track or Mount Beauty on Mount Bogong's Staircase Spur. This iconic walk can take eight weeks to complete, but many other walks, from 30 minute strolls to overnight hikes, are available. The 37km Falls-Hotham Alpine Crossing

is one of Victoria's iconic walks traversing beautiful alpine landscapes, snow gum forests, grassy plains and historic huts over a three-day hike.

Visit: parkweb.vic.gov.au

Cattlemen's Huts: Over 100 of these historic shelters are dotted throughout the Park including the oldest, National Trust classified Wallace Hut near Falls Creek, easily reached via a short 45 minute, 1.5km walk from the Bogong High Plains Road.

Flora and Fauna: The Park supports over 1100 native plant species of which 12 are endemic to the park and 38 of national significance. This is also home to the endangered Mountain Pygmy Possum, Smoky Mouse, Broad-toothed Rat, Powerful Owl, Spotted Tree Frog and She-oak Skink.



Camping: Pitching a tent overnight or for a few days is a fantastic way to experience the beauty and serenity of the park with bush camping permitted throughout much of the area. Designated camping areas may be found at:

- **JB Plain** between Hotham Village and Dinner Plain on the Great Alpine Road (walk in only)
- **Buckety Plain, Raspberry Hill and Langfords West** (horse yards) on the Bogong High Plains east of Falls Creek
- **Mountain Creek** at the foot of Mount Bogong near Tawonga

Snow: Falls Creek, Mount Hotham and Dinner Plain are all located in the National Park – skiing, snowboarding and snow play is abundant during winter.

ABORIGINAL TRADITIONAL OWNERS

Parks Victoria acknowledges the Aboriginal Traditional Owners of Victoria - including its parks and reserves. Through their cultural traditions, the Bidawal, Dhudhuroa, Gunaikurnai, Jaithmathang, Taungurong and Nindi-Ngudjam Ngarigu Monero identify the Alpine National Park as their Traditional Country. The Mitambuta and Taugaurong identify the Mount Buffalo National Park as their Traditional Country.

Visit parkweb.vic.gov.au for detailed information or visit the Mount Beauty, Bright or Myrtleford Visitor Information Centres for advice about what to see and do in the Alpine and Mount Buffalo National Parks.

visitbrightandsurrounds.com.au



MOUNT BUFFALO NATIONAL PARK

MOUNT BUFFALO IS AS IMPRESSIVE UP CLOSE AS IT IS FROM AFAR, ITS GRANITE CLIFFS AND ROCKY OUTCROPS RISING UP FROM THE OVENS VALLEY FLOOR COMMANDING ATTENTION, BEGGING TO BE EXPLORED.

In winter, against a blue sky and capped with snow, the view to Buffalo is simply breathtaking.

An easy 35km drive from Bright or around 50km from Myrtleford, the 31,000 hectare National Park is a fantastic all-season destination. In winter it's a great place to take the family for a fun day tobogganing or cross country skiing. Any other time of the year it's a nature lover's paradise, offering more than 90km of walking tracks, waterfalls, beautiful wildflowers, forests of snow gums, mossy plains, abundant wildlife, picnic places and superb bush camping.

For those inclined to adventure, Mount Buffalo is equally well endowed with cliffs

from which to sail forth in a hang glider, sheer rocky faces to abseil down, or climb up, and steep downhill grades for thrill-seekers on two wheels. Guided caving is also available.

HIGHLIGHTS

Walking: Mount Buffalo has 23 walking trails to suit any age and level of fitness, ranging from 45 minute strolls to six hour hikes. All are well defined and signposted. Several walks feature beautiful waterfalls including Lower Eurobin, Ladies Bath, Upper Eurobin and Rollasons Falls, all with picnic places equipped with tables and fireplaces. Amazing 360 degree views can be enjoyed from the highest accessible peak, The Horn.



The Chalet: Walk around the historic guest house, built in 1910, or enjoy a picnic at the lookout below.

Plants: More than 550 species of plants are protected by the National Park. Throughout the warmer months, flowering annuals and shrubs put on a spectacular display. Of special significance is the Buffalo Sallee, a species of eucalypt found only in this park.

Animals: The Park offers food and shelter to a diversity of mammals including kangaroos, wallabies, possums, gliders and wombats. Birds include Peregrine Falcons and Superb Lyrebirds, often seen scurrying across roads and tracks early in the morning on Mount Buffalo.

Camping: The camping area at Lake Catani is well equipped and available from Melbourne Cup weekend to the start of winter each year (check with Parks Victoria as it is very popular during warmer months). Pre-bookings are essential. For the more adventurous, remote sites at Rocky Creek and Mount Mcleod offer excellent hiking and camping experiences.

Snow: The perfect place to introduce the family to snow. During the cooler months Mount Buffalo becomes a winter playground offering snow play, snowshoeing, tobogganing and cross-country skiing.

visitmountbuffalo.com



TRACKS AND TRAILS

THE MOUNTAINS PROVIDE DRAMATIC BACKDROPS TO ANY WALK IN BRIGHT & SURROUNDS. THERE ARE SO MANY TO CHOOSE FROM, DIFFERENT TRACKS AND TRAILS THAT SHOWCASE THE PICTURESQUE TOWNSHIPS, RIVERS, FORESTS AND WILDLIFE OF THE AREA.

Stroll along the fresh water rivers or around one of the beautiful lakes; there are paths suitable for prams, bikes or wheelchairs. Shadowed by two National Parks, the region offers world-renowned walks, including short walks to stunning waterfalls, or challenging day walks to the state's highest mountains. Popular walks include the Canyon Walk in Bright, Tronoh Dredge in Harrietville, Mount Beauty Gorge Walk, Reform Hill in Myrtleford, Eurobin Falls in Mount Buffalo National Park or hiking the Razorback to Mt Feathertop in the Alpine National Park. There is truly no better way to explore our region than on two feet. Pick up a copy of the Bright & Surrounds Walks & Trails Guide at a local Visitor Information Centre or download it from visitbrightandsurrounds.com.au



LAKES, RIVERS AND WATERFALLS

BRIGHT AND ITS SURROUNDING VILLAGES ARE DEFINED BY THE RIVERS AND CREEKS THAT RUN THROUGH THEM. THE OVENS, BUCKLAND AND KIEWA RIVERS CARVE A PATH AMIDST OUR VALLEYS PROVIDING TRANQUIL SPACES TO EMBRACE OUR ALPINE ENVIRONMENT AND IMMERSE IN OUR PURE WATERS ...

RIVERS

Water is part of the lifestyle of Bright & Surrounds. The pristine Ovens, Buckland and Kiewa Rivers create the perfect retreat from the summer's heat. Skim stones across the pools or catch a fish for dinner. Fossick for hidden treasure, plunge into natural swimming holes, or spot local wildlife, platypus or trout. Dotted with picnic facilities and walking tracks, come and soak up the tranquillity.

LAKES

Along the valley floor and on the alpine peaks the lakes provide space for relaxation and activities. Go water skiing on Lake Buffalo or kayaking and stand up paddle boarding on Lake Catani. Try your luck fly-fishing at Lake Guy or the Mount Beauty Pondage. Cool off and swim to the pontoon at Tronoh Dredge or simply walk around any of the lakes and enjoy the natural beauty.

WATERFALLS

Mount Buffalo National Park offers some spectacular waterfalls. Take a short stroll into Lady Bath Falls and Eurobin Falls or a longer walk to Rollasons Falls and Dicksons Falls. Fainter Falls is definitely worth the visit, located on the Bogong High Plains Road between Mount Beauty and Falls Creek or take a walk through the snowgums to see the picturesque Carmichael Falls near Dinner Plain.



A CYCLING MECCA

BREEZE THROUGH THE VALLEYS AND TAKE ON THE PEAKS

Welcome to the State's premier cycling destination, a mecca for enthusiastic amateurs on cross-bikes, family groups with kids on trainer wheels, mountain biking adventurers and serious road warriors.

Bright and its surrounding towns and villages, mountains and valleys offer every imaginable terrain, knockout scenery and challenges large and small to suit anyone and everyone on two wheels. Bicycle transport services are available and there are a number of tour operators in the area offering tailor-made packages and guided cycling holidays from the sedate to the adventurous.

Myrtleford, Bright and Mount Beauty cycle stores hire out bikes and equipment including bike trailers for the kids. Pick up a Cycle Guide and ride maps from the cycle stores or call into a Visitor Information Centre. Cycle friendly businesses offer a range of cycle-specific services, facilities and information, so you get the most out of your holiday on two wheels.

Look for this logo:



EASY PEDALLING

This area is home to the famous Murray to Mountains Rail Trail, a 100km fully sealed cycle path along the old Wangaratta to Bright railway line. The trail suits all riders with a gentle gradient and offering beautiful vistas, wineries, farm gates and the lovely villages of the Ovens Valley along the way. The Trail can be tackled in short stages, overnighing along the way.

Full details at murraytomountains.com.au

ROAD CYCLING

Beautiful scenery, fresh air and exhilarating downhill runs reward those willing to take on the challenges of conquering the mountain peaks. There are many great rides to suit all levels of fitness. Cycle shops are a mine of information about the best local rides or call into the Visitor Information Centres for advice, maps and brochures. Two of the iconic local favourites with the hard-core road riders are:

Bright to Mount Buffalo chalet return: A hard 70km uphill and thrilling downhill bike ride for the serious road cyclist.

Queen Victoria loop: a spectacular 235km trek from Falls Creek via the Bogong High Plains Road to Omeo, Mount Hotham, Bright, the Tawonga Gap, Mount Beauty and back to Falls. A favourite training circuit for elite athletes and anyone up for a challenge.

More information: brightandsurrounds.com.au

MOUNTAIN BIKING

Fast becoming known as a key destination for keen mountain bikers, the region offers a multitude of mountain bike tracks to suit all levels of fitness and experience. Two renowned mountain bike parks; Mount Beauty's Big Hill Mountain Bike Park and Bright's Mystic MTB Park, offer an excellent range of trails and single tracks to suit all levels. Falls Creek, Harrietville and Dinner Plain also have heaps on offer. There is mountain bike hire and transport available.

Find out more at: thedirtydozen.com.au



TAKE A TOUR

FANTASTIC SCENIC DRIVES CAN BE ENJOYED IN THIS AREA INCLUDING THE GREAT ALPINE ROAD AND THE BOGONG-ALPINE WAY TOURING LOOP.

Both drives are well worth a leisurely approach with picturesque villages offering plenty of accommodation options, farm gates offering fresh seasonal produce, countless picnic places and along the way, simply breathtaking scenery. The routes are all suitable for car, motorbike or cycle touring, however in winter, mountain roads may be affected by icy conditions. Chains must be carried during the snow season.

VicRoads has up to date information on road conditions. Go to vicroads.vic.gov.au for the latest road and weather conditions.

The Great Alpine Road – B500. 308km one way. Follow the delightful Ovens Valley from the Hume Freeway turnoff near Wangaratta, through Gapsted and Myrtleford, Porepunkah, Bright and Harrietville before the spectacular climb up and over the Mount Hotham plateau, descending via Omeo to the Gippsland Lakes at Bairnsdale. Dinner Plain, 13km from Mount Hotham Resort, is a great place to stop for a stretch and some lunch or an overnight stay.

The Bogong-Alpine Way touring loop, a fully sealed 235km road, is another great way to experience Victoria's High Country and the Alpine National Park. Starting at Bright, head for Mount Beauty, Bogong Village, then Falls Creek to Omeo, looping back to Bright via Dinner Plain and Mount Hotham. Please note that this is a seasonal road, closed in winter due to snow cover.

Bright to Mount Buffalo via Porepunkah.

Just 35km from Bright and well worth the drive, Mount Buffalo is a spectacular National Park of sheer cliffs, waterfalls, wildflowers and more than 90km of walking trails.

Bright-Mount Beauty-Tawonga-Happy Valley-Ovens-Bright.

Allow a half or a full day to take in the panoramic views of Mount Bogong, Victoria's highest peak, from Tawonga Gap and to explore the towns and villages dotted along the lovely Kiewa and Happy Valleys, returning via the Great Alpine Road at Ovens. There are many farm gates to explore along the way.

There are many 4WD trails to explore in this area. Two of the easiest and most enjoyable are:

Mount Porepunkah Circuit: From Bright the trail is 40km, offers excellent views from the summit and is usually accessible all year round.

Clear Spot Buckland Valley Circuit: 33km, starting from Bright and taking in pine plantations and excellent views of Mount Buffalo and Feathertop from Clear Spot. NB. Beware of logging trucks on this trail.

Don't feel like driving? Leave it to someone else and book a tour with a local operator.

For more information:
visitbrightandsurrounds.com.au



FOR THE LOVE OF FOOD

FRESH FOOD AND GREAT DINING EXPERIENCES ARE SYNONYMOUS WITH BRIGHT AND ITS SURROUNDING TOWNS, VILLAGES AND COUNTRYSIDE.

The fertile river valleys, a climate blessed with four distinct seasons and a heritage steeped in the Italian traditions that celebrate the making and sharing of good food and wine are evident in the array of superb local produce on the menu at the many excellent restaurants, cafés and wineries of the area.

Expect hatted restaurants, cooking schools, coffee roasters and a strong café culture. Japanese, Thai, Italian and modern Australian menus are created with local produce. Throughout the region you can indulge degustation dinners, tapas, true Italian pizza and incredible pub grub.

Prime beef, top notch dairy, nuts of all kinds, berries, tomatoes, herbs, stone and citrus fruits, apples, olives, all kinds of vegetables like sweet corn and asparagus and of course grapes, grow happily in this slice of heaven. Produce markets and visiting farm gates are a great way to sample seasonal fresh food as well as locally made jams and preserves, chocolate, oils and ice-creams.

Regular markets are:

- **Bright Make It, Bake It, Grow It Market**
- *third Saturday of each month*
- **Myrtleford Indoor Market**
- *every Saturday*
- **Mount Beauty Community Market**
- *first Saturday of the month*

Pick up a copy of Victoria's High Country Food and Wine Guide to regional produce of the North East at the Bright, Myrtleford or Mount Beauty Visitor Information Centres.

Bright and the surrounding area boasts a number of gourmet businesses creating fine bespoke products such as chocolate, pumpkin seed oil and olive oils. Fine chutneys and jams created with the freshest produce grown in the valleys, along with sweet treats like ice-cream and fudge.

Great local food is also celebrated at a number of not-to-be-missed festivals held throughout the year where cooking and tasting classes with leading chefs and winemakers are regular highlights.

Food Lovers' Festivals & Events

WANDI NUT FESTIVAL

Wandiligong | April

Cooking demos by leading chefs, tastings and markets featuring locally grown walnuts, chestnuts, hazelnuts and pecans

HIGH COUNTRY HARVEST

All towns & villages | May

Local restaurants, cafés, wineries and farm gates feature seasonal menus matched with local wines. Activities include gourmet bicycle tours, classes with renowned local chefs, progressive dinners, jam making and treats at fireside village bonfires.

LA FIERA

Myrtleford | May

Celebrates Myrtleford's Italian heritage. Features Gnocchi making with the Nonnas, Italian food markets, the Longest Pasta Lunch, masterclasses, food & wine tours.





THIRSTY WORK

COLD WINTERS AND HOT SUMMERS COMBINE WITH RICH VALLEY SOILS TO PRODUCE PERFECT GROWING CONDITIONS FOR VINES AND FULL-BODIED GRAPES.

Vineyards were first established here during the 19th century and today over 30 cool climate grape varietals including Sauvignon Blanc, Durif, Sangiovese, Shiraz, Prosecco and Pinot Gris are grown in the area, with around a dozen cellar doors dotted throughout the Ovens and Kiewa, Buckland and Happy Valleys.

Many cellar doors feature restaurants or cafés offering fresh local produce and beautiful views of the surrounding countryside. These are great places to indulge in leisurely lunches, meet the winemakers and learn the art of pairing food and wine. The cooler months are a great time to enjoy cosy open

fires and sample local port or delicious stickies.

Beer lovers are also well catered for with boutique breweries in Mount Beauty and Bright offering a range of crafted ales flavoured with locally grown hops from the Ovens Valley. Regular brewery tours and tastings of a range of award-winning beers are available as well as hands-on brewing workshops with the masters. Visit brightandsurrounds.com.au for details, or take a tour of all of the boutique breweries of the region via the High Country Brewery Trail.

See more at victoriashighcountry.com.au



RETAIL THERAPY

You will be spoilt for choice and sure to find that special something in Bright and its surrounding towns and villages. Boasting an array of fine commercial outlets ranging from specialty stores to op shops with everything in between, Bright & Surrounds is sure to have something to suit all tastes, styles and budgets. If you are looking for a unique piece or gift our boutique stores are just the spot, after hours of browsing, a coffee in one of the many cafés might be on the cards. Many stores are open every day of the week and all year round, so come enjoy our range and pick up some original items, or take advantage of some of the amazing produce on offer to prolong your stay even when you return home.

For more information: visitbrightandsurrounds.com.au



FESTIVALS AND EVENTS

BRIGHT, MYRTLEFORD, MOUNT BEAUTY AND HARRIETVILLE
CELEBRATE FESTIVALS AND EVENTS ALL YEAR ROUND.



JANUARY

Dederang Races
Cool Summer Music Festival
Audax Alpine Classic
Bonjour Bright
Australia's Biggest
Duck Race
Myrtleford Bush Market

FEBRUARY

Sweet Valley Sounds
Australian Adventure
Travel Film Festival

MARCH

The Myrtleford Festival
Brighter Days Charity
Festival
Peaks Challenge

APRIL

Alp De Buffalo
Buffalo Stampede
Autumn Festival
Bright Fun Run
Geebung Polo, Easter
High Country Easter Festival
Mount Beauty Music Festival
Wandiligong Nut Festival
Myrtleford Lawn Tennis
Tournament

MAY

Great Alpine Pick Harrietville
La Fiera Myrtleford

JUNE

Official Snow Season
Opening

AUGUST

Kangaroo Hoppet
Australian Sled Dog
Challenge



SEPTEMBER

Alfred 6hr MTB Ride
Myrtleford Alpine
Motorbike Rally

OCTOBER

Harrietville 1/2 Marathon
Swagger Music Festival
Myrtleford and District
Agriculture Show
Spring Festival
Bright Oktoberfest
4 Peaks Alpine Climb
Mitta to Mount Beauty

NOVEMBER

4 Peaks Alpine Climb
Bright Iconics Rod Run
Bright 24 hr MTB Race
Mountaingrass Harrieville

DECEMBER

Tour of Bright
Tour Fondo
Myrtleford "Golden Spurs"
Rodeo
Carols by Candlelight



FAMILY FUN

Families of all ages and sizes will find something to enjoy and share together in Bright & Surrounds. No matter what the season, there are loads of activities, from snow play in Winter to exploring rivers and lakes in Summer, from playing in the Autumn leaves, to smelling the Spring blooms. It doesn't matter how old you are, it's the simple pleasures that create smiles, a movie at the cinema, finding a favourite in a lolly shop or enjoying homemade ice cream or fudge. Lose each other in the hedge maze or have a hit of tennis.

YOUNG FAMILIES

For the younger generations there are a number of parks, filled with swings, slides,

climbing frames and new places to explore. Bright has a splash park, on the river's edge in Centenary Park; hours of entertainment as water squirts, dances and cools on the hot summer days.

Hand feed deer, emus and ostriches, pat the goats and enjoy the chickens wandering around your feet. Catch wild trout, or improve your chances with a visit to the trout and salmon farm.

TWEEN AND TEENS

For tweens and teens a day floating down one of the rivers is quintessential, pack your sunscreen and a snack for hours of drifting. Spend a day on a mountain bike, Mystic Mountain Bike Park in Bright and Big

Hill Mountain Bike Park in Mount Beauty offer trails for those new to mountain biking and downhill tracks for the seasoned riders.

Families have been coming to the region for years for their annual camping holiday. With 20 holiday parks to choose from and many options to bush camp there is an adventure for all. Toast marshmallows over a camp fire and share stories of the day over dinner together.

RIDES AS A FAMILY

The region offers so much for families on bikes. The Murray to Mountains Rail Trail offers a safe, smooth path for all riders, bike trailers and training wheels. There are some great 5-6km rides on formed Rail Trails that

take you to Porepunkah or Wandiligong for lunch. Combine a play in the park with a ride around the Pondage in Mount Beauty or explore the Ovens River Trail in Myrtleford. Ride the trail from Harrietville to the Trout Farm.

SNOW FUN

Winter is exciting for families. Create memories for life with a first time visit to the snow. Take a day trip to Mount Buffalo to build a snowman, throw a snowball or just to experience the sensation of walking on snow. Alternatively Dinner Plain offers affordable options and a great location to learn how to ski or snowboard.



BRIGHT, MYRTLEFORD & MOUNT BEAUTY VISITOR INFORMATION

CENTRES ARE OPEN SEVEN DAYS A WEEK FROM 9AM TO 5PM

CALL 1800 111 885

START YOUR BRIGHT & SURROUNDS HOLIDAY EXPERIENCE AT ANY OF OUR THREE ACCREDITED VISITOR INFORMATION CENTRES.

Friendly staff and volunteers offer a wealth of local knowledge and can help you with where to eat, what to do with the kids, where to hire a bike, tour bookings, and provide up to date information about our festivals and events.

ALPINE

VISITOR INFORMATION
CENTRE:

119 Gavan Street

1800 111 885

visitbright.com.au

alpinevic@alpineshire.vic.gov.au

MYRTLEFORD

VISITOR INFORMATION
CENTRE:

Post Office Complex,
Great Alpine Road

03 5755 0514

visitmyrtlefordvic.com.au

myrtlefordvic@alpineshire.vic.gov.au

MOUNT BEAUTY

VISITOR INFORMATION
CENTRE:

31 Bogong High Plains Road

1800 111 885

visitmountbeauty.com.au

mtbeautyvic@alpineshire.vic.gov.au



@brightandsurrounds



[facebook.com.au
/greatalpinevalleys](https://facebook.com.au/greatalpinevalleys)



@brightsurrounds



Search Bright
& Surrounds

LOCAL MARKETS

PURCHASE LOCALLY MADE GOODS, MEET THE MAKERS AND APPRECIATE THE SKILLS OF LOCAL ARTISTS. BRIGHT & SURROUNDS HAS A SELECTION OF MARKETS WORTH CONSIDERING WHEN PLANNING YOUR NEXT VISIT TO THE REGION.

Enjoy the bustle of annual markets, or the vibrancy of monthly markets. Stock up on treats from local artisans, including pies, breads, oils and smoked goods. Shop for unique jewellery, handmade children's clothes and furniture, grab a coffee and soak up the vibe of the markets. Pick up a copy of the seasonal festivals and events guide from Visitor Information Centres or go to visitbrightandsurrounds.com.au for more information.

MONTHLY MARKETS:

- **Bright** Make It, Bake It, Grow It Market
- third Saturday 9.00am-12.30pm
- **Myrtleford** Indoor Market
- every Saturday 9am-2pm

- **Mount Beauty** Community Market
- first Saturday 9am-2pm
- **Myrtleford** Flea Market
- second Saturday 8.30am-12pm



EMERGENCY

Police/Fire/Ambulance
000

SES

132 500

VICROADS

Road closures
131 170

VICTORIAN BUSHFIRE INFORMATION LINE

1800 240 667

PARKS VICTORIA

131 963

ABC EMERGENCY RADIO

89.7FM Bright

106.5FM Mount Beauty/Upper Kiewa

91.7FM Myrtleford

106.5FM/88.1FM Dinner Plain